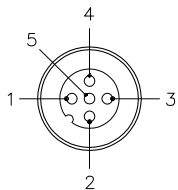


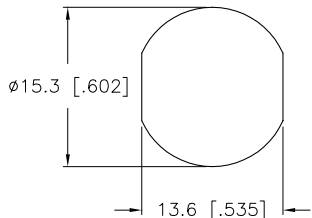
MALE END VIEW



- 1 = GRAY 1
- 2 = GRAY 2
- 3 = GRAY 3
- 4 = GRAY 4
- 5 = GRAY 5

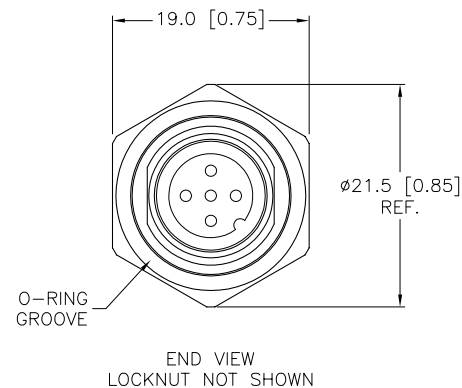
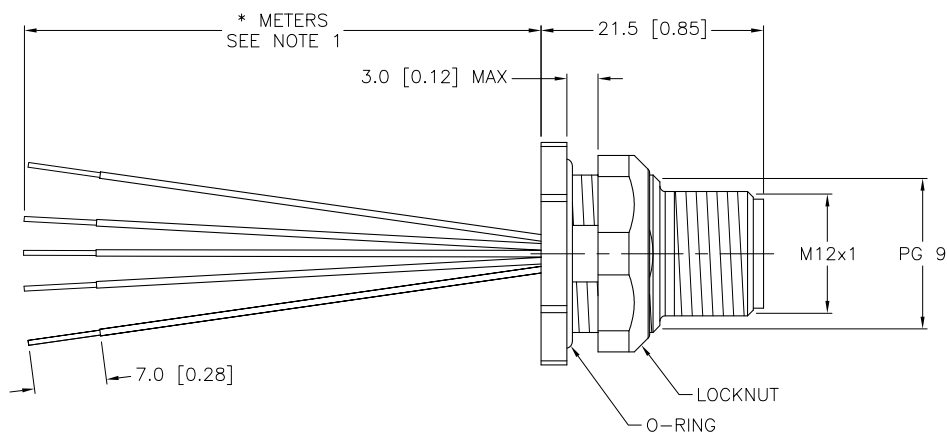


TYPICAL PANEL CUTOUT



SPECIFICATIONS

CONTACT CARRIER MATERIAL/COLOR	NYLON OR TPU/YELLOW
CONTACT MATERIAL/PLATING	BRASS/GOLD
RATED CURRENT [A]	4.0 A
RATED VOLTAGE [V]	250 V
HOUSING/LOCKNUT MATERIAL	BRASS/NICKEL
NUMBER OF CONDUCTORS [AWG]	5x18 AWG
TEMPERATURE RATING	-40°C to +105°C (-40°F to +221°F)
PROTECTION CLASS	MEETS NEMA 1,3,4,6P AND IEC IP68



CABLE LENGTH	TOLERANCE
ALL LENGTHS	+ 4% (OR 50mm) OF LENGTH - 0% (OR 0mm) OF LENGTH WHICHEVER IS GREATER
STRIP LENGTH	TOLERANCE
0-7mm	±0.5mm
8-29mm	±1.0mm
30-49mm	±2.0mm
50-69mm	±3.0mm
70-100mm	±4.0mm
OVER 100mm	±5.0mm

NOTES:

- "\*" INDICATES LEAD LENGTH IN METERS. CONTACT TURCK TO ORDER SPECIFIC LENGTHS.
- "/S621" DESIGNATES EUROFAST RECEPTACLE WITH 18 AWG GRAY NUMBER WIRES.

SOURCE DRAWING - FOR REFERENCE ONLY

RELATED DOCUMENTS		3RD ANGLE PROJECTION		THIS DRAWING IS PROPERTY OF TURCK INC. USE OF THIS DOCUMENT WITHOUT WRITTEN PERMISSION IS PROHIBITED.		3000 CAMPUS DRIVE MINNEAPOLIS, MN 55441 1-800-544-7769 (763) 553-7300 (763) 553-0708 fax turck.com		
1.			DRFT	DJW	DATE	05/02/07	DESCRIPTION	
2.			DSGN		SCALE	1=.8		
3.		ALL DIMENSIONS DISPLAYED ON THIS DRAWING ARE FOR REFERENCE ONLY	UNIT OF MEASUREMENT				IDENTIFICATION NO.	REV
4.			MILLIMETER [ INCH ]					
MATERIAL		SEE SPECIFICATIONS		CONTACT TURCK FOR MORE INFORMATION		FSFD 4.5-*/S621		
FINISH		SEE SPECIFICATIONS		DO NOT SCALE THIS DRAWING		B		
B	DRAWING PROCESSED AS PART OF ECO 33971	CBM	04/06/11	33971	FILE: 777016910			
REV	DESCRIPTION	BY	DATE	ECO NO.	SHEET 1 OF 1			